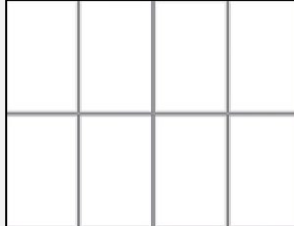
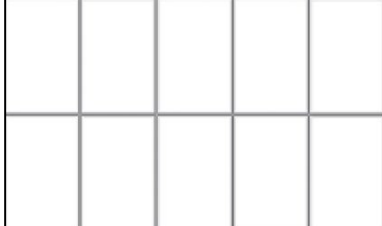
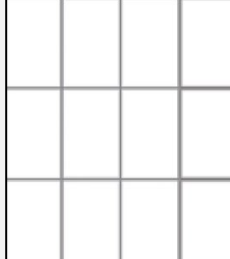
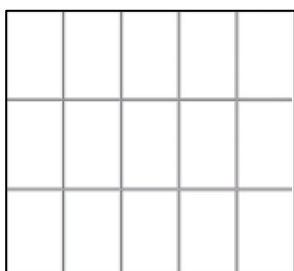
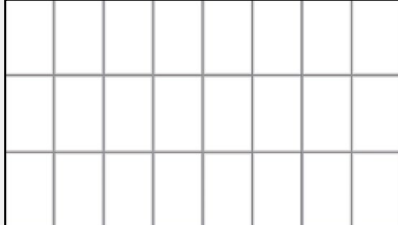
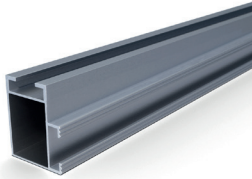


## STANDING PACK - Fissaggio su tetto in tegole

<p><b>Configurazione da 3 kWp</b></p> <p>Composto da:</p> <ul style="list-style-type: none"> <li>• 6 Binari (3,3m)</li> <li>• 4 Collegamenti binario</li> <li>• 20 Morsetti universali</li> <li>• 20 Ganci per tetti in tegole in acciaio</li> <li>• 20 Viti TESTA A MARTELLO M8X20</li> <li>• 20 Dadi FLANGIATI M8</li> </ul>	<p><b>Quantità pannelli</b></p> <p>8</p>	<p><b>Layout standard</b></p> 
<p><b>Configurazione da 4 kWp</b></p> <p>Composto da:</p> <ul style="list-style-type: none"> <li>• 8 Binari (3,3m)</li> <li>• 4 Collegamenti binario</li> <li>• 24 Morsetti universali</li> <li>• 24 Ganci per tetti in tegole in acciaio</li> <li>• 24 Viti TESTA A MARTELLO M8X20</li> <li>• 24 Dadi FLANGIATI M8</li> </ul>	<p><b>Quantità pannelli</b></p> <p>10</p>	<p><b>Layout standard</b></p> 
<p><b>Configurazione da 5 kWp</b></p> <p>Composto da:</p> <ul style="list-style-type: none"> <li>• 12 Binari (3,3m)</li> <li>• 6 Collegamenti binario</li> <li>• 30 Morsetti universali</li> <li>• 30 Ganci per tetti in tegole in acciaio</li> <li>• 30 Viti TESTA A MARTELLO M8X20</li> <li>• 30 Dadi FLANGIATI M8</li> </ul>	<p><b>Quantità pannelli</b></p> <p>12</p>	<p><b>Layout standard</b></p> 
<p><b>Configurazione da 6 kWp</b></p> <p>Composto da:</p> <ul style="list-style-type: none"> <li>• 12 Binari (3,3m)</li> <li>• 6 Collegamenti binario</li> <li>• 36 Morsetti universali</li> <li>• 36 Ganci per tetti in tegole in acciaio</li> <li>• 36 Viti TESTA A MARTELLO M8X20</li> <li>• 36 Dadi FLANGIATI M8</li> </ul>	<p><b>Quantità pannelli</b></p> <p>15</p>	<p><b>Layout standard</b></p> 
<p><b>Configurazione da 10 kWp</b></p> <p>Composto da:</p> <ul style="list-style-type: none"> <li>• 18 Binari (3,3m)</li> <li>• 12 Collegamenti binario</li> <li>• 54 Morsetti universali</li> <li>• 54 Ganci per tetti in tegole in acciaio</li> <li>• 54 Viti TESTA A MARTELLO M8X20</li> <li>• 54 Dadi FLANGIATI M8</li> </ul>	<p><b>Quantità pannelli</b></p> <p>24</p>	<p><b>Layout standard</b></p> 



**VS+ MONTAGESCHIENE 41 X 35 MM**  
**VS+ MOUNTING RAIL 41 X 35 MM**

0,593 kg/m

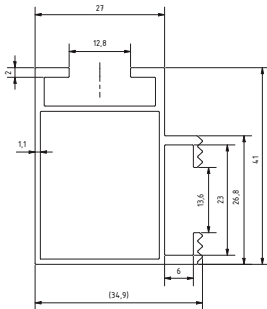
**Material:** Aluminium

**Zertifizierung:** TÜV ID: 1111212485;  
MCS012 IK0197/03

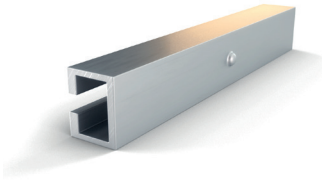
0,593 kg/m

**Material:** Aluminum

**Certification:** TÜV ID: 1111212485;  
MCS012 IK0197/03



Länge/ Length	Farbe/ Colour	Artikelnummer/ Article Number
2250 mm	Blank/blank	400523
2250 mm	Schwarz/black	400523-B
3300 mm	Blank/blank	400524
3300 mm	Schwarz/black	400524-B
4400 mm	Blank/blank	400525
4400 mm	Schwarz/black	400525-B
6200 mm	Blank/blank	400513
Zuschnitt/ Cusom cut	Blank/blank	400519
Zuschnitt/ Cusom cut	Schwarz/black	400519-B



**VS+ SCHIENENVERBINDER 41 X 35**  
*VS+ RAIL CONNECTOR 41 X 35*

**400531**

195x24,1x30 mm

0,151 kg

**Schielenlänge:** 195,0 mm

**Material:** Aluminium

**Zertifizierung:** TÜV ID: 1111212485;

MCS012 IK0197/03

**Verwendbar mit:** VS+ Montageschiene 41 x 35 mm

*195x24,1x30 mm*

*0,151 kg*

***Rail length:*** 195,0 mm

***Material:*** Aluminum

***Certification:*** TÜV ID: 1111212485;

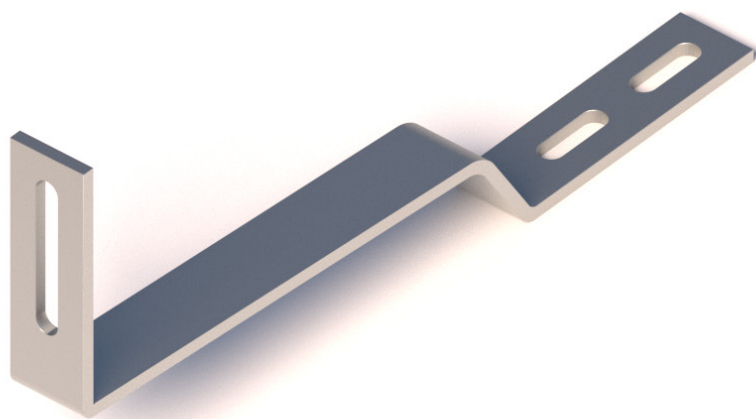
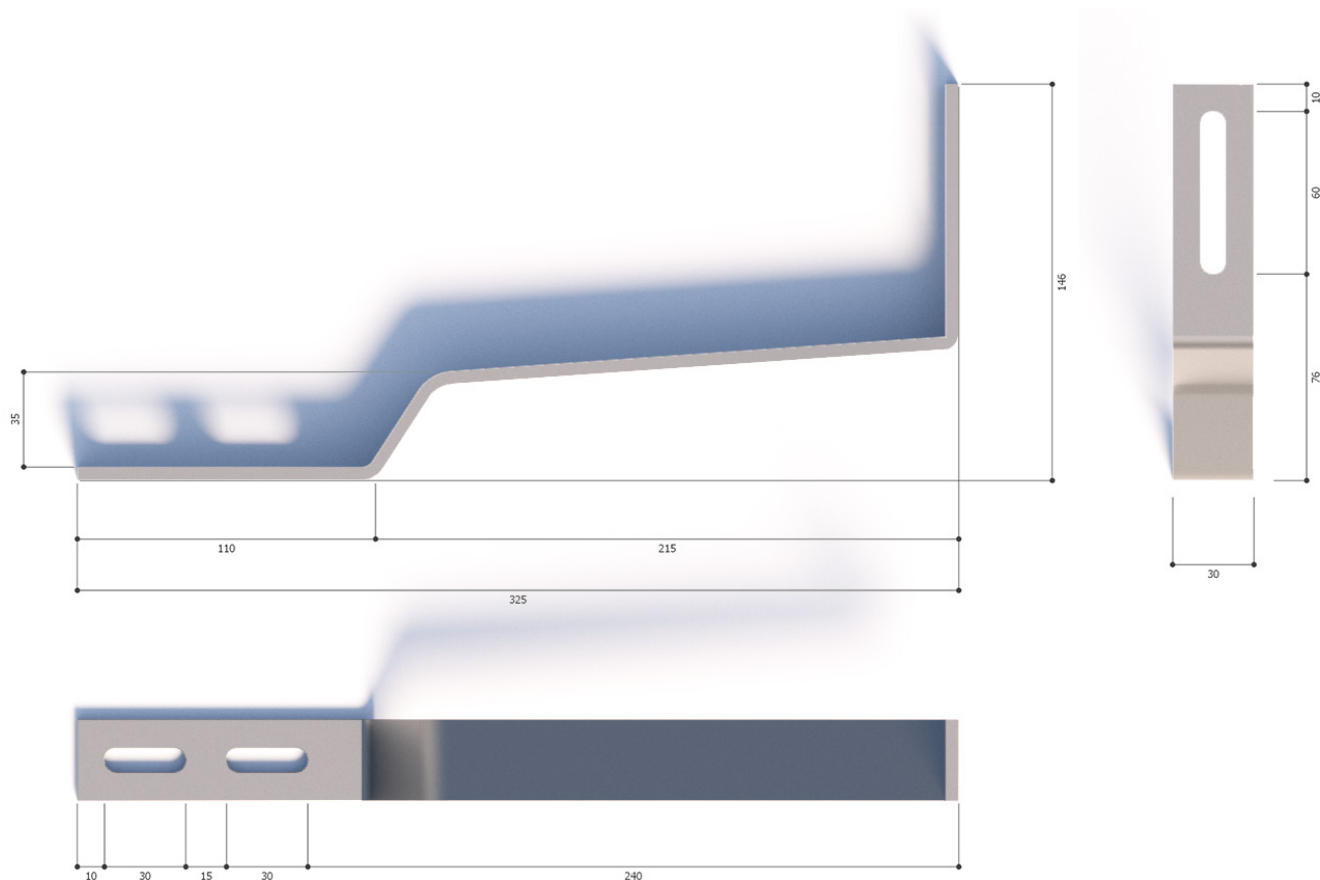
*MCS012 IK0197/03*

***Usable with:*** VS+ Mounting rail 41 x 35 mm

## Gancio per tetto in tegole in acciaio GREENSUN

LAMIERA AISI430 SP.5mm

CODICE GRSSTADIS0000006





RS1

RS1

**420080**

35x36,5x60 mm

0,083 kg

Set ist vormontiert

**Material:** Korrosiongeschützter Stahl

**Zertifizierung:** ETN 010T1606; TÜV ID:  
1111212485; MCS012 IK0197

**Modularten:** Gerahmte Module

**Rahmenhöhe:** 30,0 - 50,0 mm

**Max. Anzugsmoment:** 13,00 Nm

**Antrieb:** Innensechskant 5mm

35x36,5x60 mm

0,083 kg

Set pre-assembled

**Material:** Corrosion resistant steel

**Certification:** ETN 010T1606; TÜV ID:  
1111212485; MCS012 IK0197

**Module types:** Framed modules

**Module thickness:** 30,0 - 50,0 mm

**Max. torque:** 13,00 Nm

**Drive:** Hexagon socket 5 mm



RS1 (SCHWARZ)  
RS1 (BLACK)

**420080-BE**

35x36,5x60 mm

0,087 kg

Set ist vormontiert

**Material:** Korrosiongeschützter Stahl

**Zertifizierung:** TÜV ID: 1111212485;

MCS012 IK0197

**Modularten:** Gerahmte Module

**Rahmenhöhe:** 30,0 - 50,0 mm

**Max. Anzugsmoment:** 13,00 Nm

**Antrieb:** Innensechskant 5mm

35x36,5x60 mm

0,087 kg

Set pre-assembled

**Material:** Corrosion resistant steel

**Certification:** TÜV ID: 1111212485;

MCS012 IK0197

**Module types:** Framed modules

**Module thickness:** 30,0 - 50,0 mm

**Max. torque:** 13,00 Nm

**Drive:** Hexagon socket 5 mm