



WATER HEATERS

Wall-hung instantaneous low NOx



WATER HEATERS

Wall-hung instantaneous low NOx

The latest generation of Immergas gas water heaters meets the new european standard of “eco-friendly design” introduced for NOx emissions starting from 26/09/2018 (< 56 mg/kWh, weighted average value, referred to high calorific value).

The range comes in various versions for a total of 6 models, instantaneous, compact to satisfy different comfort and space needs:

- **CAESAR ECO**, sealed chamber and fan assisted versions, for indoors (type C)
- **CAESAR EXTRA** outdoors versions without ducts (type A₂)
- **JULIUS ECO** open chamber and conventional flue, for indoors, to be installed without power grid connection (type B)

Immergas water heaters are built to the highest standard complying with the technical standard for the protection of safety. During the life of the products, their performances are influenced by external factors, such as the hardness of water, atmospheric agents, plant's incrustations and so on. The declared data refer to new products regularly installed and used in compliance with current regulations.

NOTE: It is recommended to have a correct periodic maintenance.





MAXIMUM SANITARY COMFORT

Ideal for replacing obsolete appliances, Immergas water heaters range is born to satisfy all domestic hot water needs and is characterized by the great hydraulic sensitivity thanks to its electronic ensuring the correct functioning even in case of reduced flow-rate withdrawal and low water pressure.

REDUCED EMISSION OF NO_x

The new eco-friendly burner with double vertical ramp and cooled by the water leaving from the heat exchanger, has been designed to minimize secondary air and limit the flame temperature in order to **reduce emissions of NO_x/CO and to avoid condensation.**

EASY TO USE

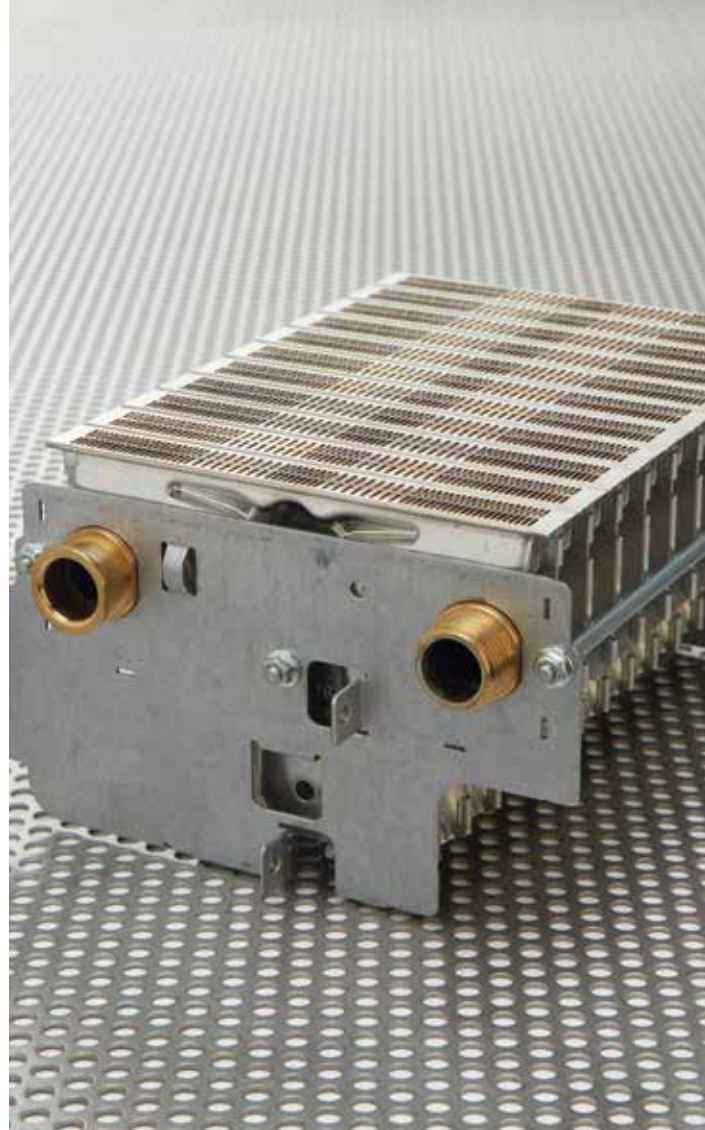
In order to simplify the use by users, the interface LCD and encoder knob (only for CAESAR ECO and CAESAR EXTRA), offer simple and fast adjustments and settings



CAESAR ECO 11/14

Wall-hung instantaneous for indoors, sealed chamber fan assisted





HIGH HYDRAULIC SENSITIVITY

The microprocessor electronic board ensures excellent domestic hot water temperature stability during D.H.W. use and even with low water pressure.

The flow meter and the double NTC sanitary probe, optimize the gas consumption according to the quantity of water required and the selected temperature.

SOLAR FUNCTION AS STANDARD

Thanks to the inlet NTC probe (in addition to outlet NTC probe), CAESAR ECO is equipped with **solar function as standard**.

This function inhibits the ignition of the burner when the inlet water temperature is close to the sanitary temperature settled. It is therefore possible to connect the water heater downstream to a solar storage tank, simply adding a thermostatic mixing valve.

WIDE RANGE OF ORIGINAL FLUE KITS

For CAESAR ECO it is possible to install the specific "Blue Series" push-fitting double and concentric flue kits, solving different system situations. The kits are made of aluminum and complete with gaskets to guarantee the seal. The push-fitting system allows fast and functional installation. For maximum lengths make reference to the instruction booklet of the appliance.



Technical data	Unit of measurement	CAESAR ECO 11	CAESAR ECO 14
Code Code	N.G. L.P.G.	3.028684 3.028684GPL	3.028685 3.028685GPL
Maximum nominal heat input	kW (kcal/h)	21,5 (18.490)	27,0 (23.220)
Minimum nominal heat input	kW (kcal/h)	9,5 (8.170)	10,0 (8.600)
Maximum nominal heat output	kW (kcal/h)	19,3 (16.604)	24,3 (20.921)
Minimum nominal heat output	kW (kcal/h)	8,6 (7.353)	9,0 (7.706)
Domestic hot water adjustable temperature	°C	37-60	37-60
Flow rate capacity in continuous duty (ΔT 25°C) mixed	l/min	11,1	14
Minimum water flow rate ignition	l/min	2	2
Minimum pressure	bar	0,13	0,13
Maximum pressure	bar	10	10
Electric power supply	(V/Hz)	230/50	230/50
Equipment electrical system protection	IP	X5D	X5D
Weight	kg	14	16

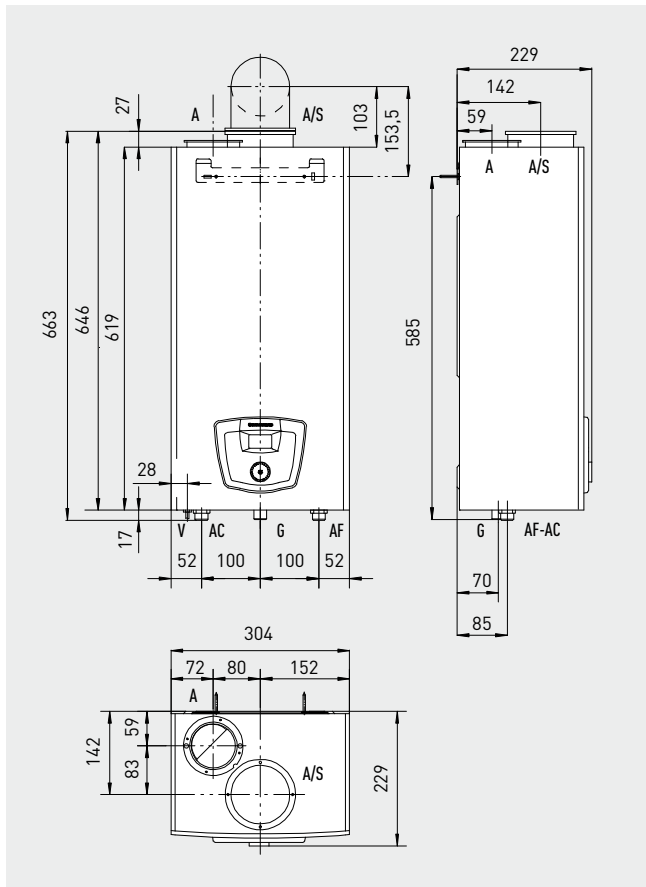
CAESAR ECO 11



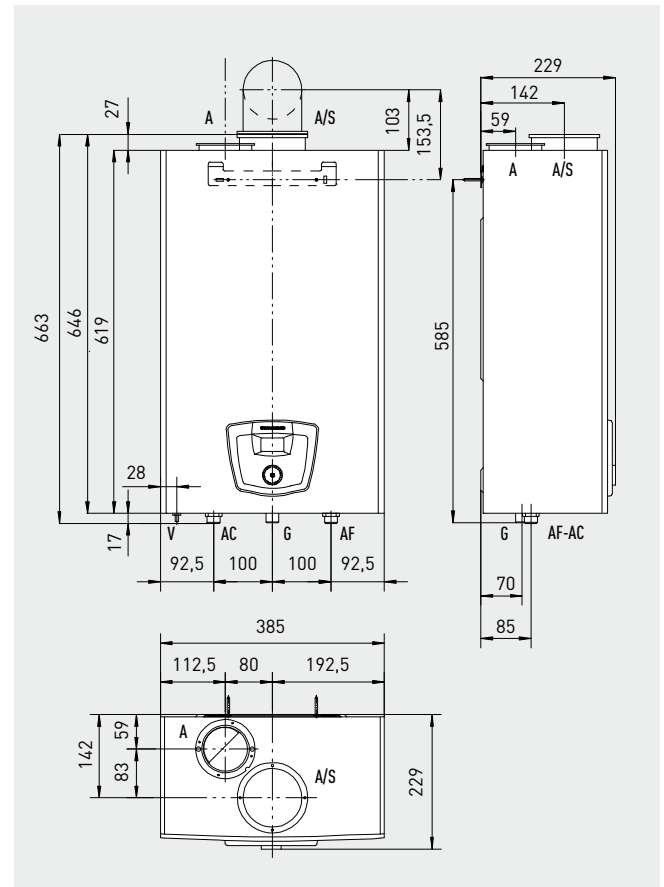
CAESAR ECO 14



CAESAR ECO 11



CAESAR ECO 14

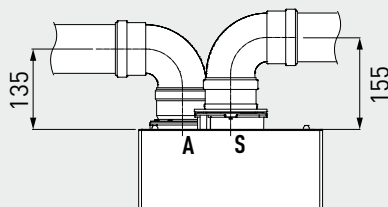


Key

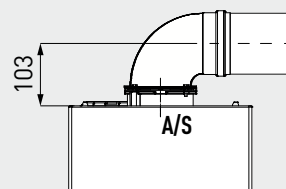
- G** Gas supply
- AC** Domestic hot water outlet
- AF** Domestic cold water inlet
- V** Electrical connection
- A/S** Inlet/outlet
- S** Outlet
- A** Inlet

Hydraulic connections

Gas	D.H.W.	
	AC	AF
G	AC	AF
3/4"	1/2"	1/2"



Twin pipe kit Ø 80/80



Horizontal kit Ø 60/100

To ensure correct installation of the appliance, the air inlet/flue outlet pipes kit must be selected from the Immergas "Blue Series" flue systems. For maximum lengths make reference to the instruction booklet of the appliance.



CAESAR EXTRA 11/14

Wall-hung instantaneous for outdoors, without flue kits





QUICK INSTALLATION WITHOUT DUCTS

CAESAR EXTRA is a type A₂ appliance that **can be installed without flue pipes** as the air intake and the expulsion of the combustion products take place in the location of installation, that is outdoor. The water heater is equipped with spacers that keep the appliance 11 mm from the rear wallrear, to allow air intake. Fumes are discharged through the front grille.

FOR OUTDOORS WITH HIGH PROTECTION FROM THE FROST

CAESAR EXTRA has been designed to be installed exclusively **outdoor in a partially protected area**. The anti-freeze protection, as standard, up to -15 °C is guaranteed by an electric resistance. For an additional weather protection it is possible to use the cover kit 3.029443.

SOLAR FUNCTION AS STANDARD

Thanks to the inlet NTC probe (in addition to outlet NTC probe) CAESAR EXTRA is equipped with **solar function as standard**. This function inhibits the ignition of the burner when the inlet water temperature is close to the sanitary temperature settled. It is therefore possible to connect the water heater downstream to a solar storage tank, simply adding a thermostatic mixing valve.



Technical data	Unit of measurement	CAESAR EXTRA 11	CAESAR EXTRA 14
Code Code	N.G. L.P.G.	3.028687 3.028687GPL	3.028688 3.028688GPL
Maximum nominal heat input	kW (kcal/h)	21,5 (18.490)	27,0 (23.220)
Minimum nominal heat input	kW (kcal/h)	9,5 (8.170)	10,0 (8.600)
Maximum nominal heat output	kW (kcal/h)	19,3 (16.604)	24,3 (20.921)
Minimum nominal heat output	kW (kcal/h)	8,6 (7.353)	9,0 (7.706)
Domestic hot water adjustable temperature	°C	37-60	37-60
Flow rate capacity in continuous duty (ΔT 25°C) mixed	l/min	11	14
Minimum water flow rate ignition	l/min	2	2
Minimum pressure	bar	0,13	0,13
Maximum pressure	bar	10	10
Minimum working temperature	° C	- 15	- 15
Electric power supply	(V/Hz)	230/50	230/50
Equipment electrical system protection	IP	X5D	X5D
Weight	kg	14	15

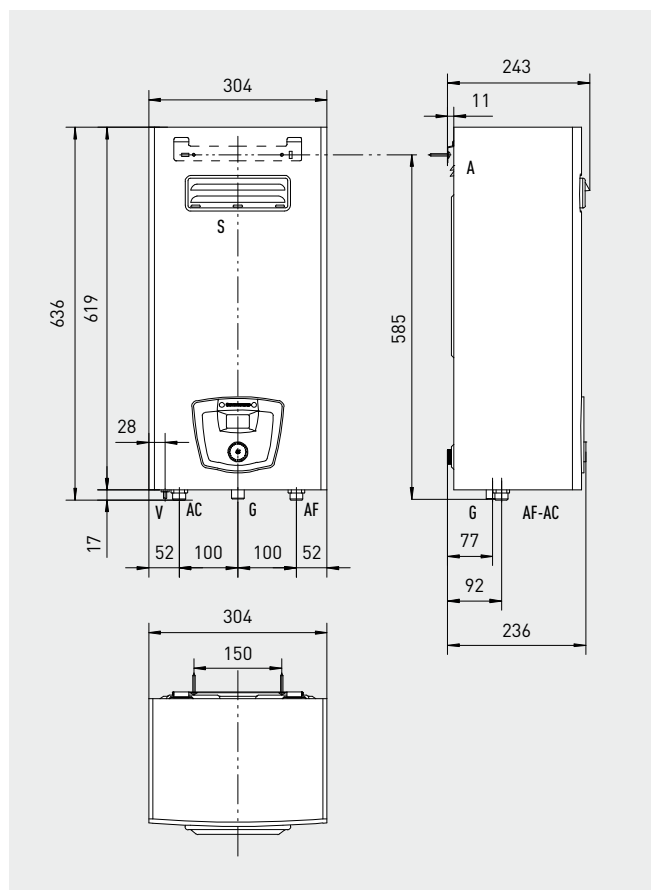
CAESAR EXTRA 11



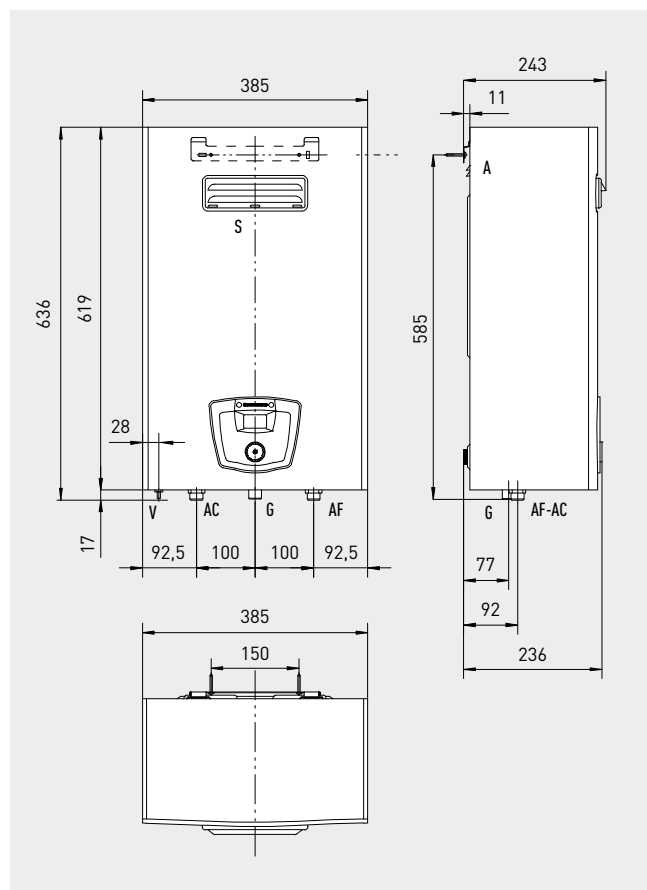
CAESAR EXTRA 14



CAESAR EXTRA 11



CAESAR EXTRA 14



Key

V	Electrical connection
AC	Domestic hot water outlet
G	Gas supply
AF	Domestic cold water inlet
A	Inlet
S	Outlet

Hydraulic connections

Gas	D.H.W.	
	AC	AF
G	1/2"	1/2"
3/4"	1/2"	1/2"



JULIUS ECO 11/14

Wall-hung instantaneous for indoors, open chamber conventional flue





ELECTRONIC IGNITION WITH BATTERIES

Allows the installation of JULIUS ECO even in locations without power grid

TEMPERATURE UNDER CONTROL, MAXIMUM COMFORT

The excellent hydraulic sensitivity guarantees the correct operation even with flow-rate withdrawal and poor water pressure, moreover it ensures a good comfort without annoying temperature hunting.

GAS SAVINGS

The modulating gas-water group reduces the gas flow rate to the burner guaranteeing consumption proportional to the domestic hot water required by the end user, moreover through the gas economizer selector it is possible to reduce the power of the appliance when needs are more contained (for example during summer season or with low flow rate withdrawal) with a consequent gas savings

CHIMNEY SAFETY DEVICE

In case the chimney draught is not sufficient, the safety device switches off the water heater.



Technical data	Unit of measurement	JULIUS ECO 11	JULIUS ECO 14
Code	N.G.	3.028682	3.028683
Code	L.P.G.	3.028682GPL	3.028683GPL
Maximum nominal heat input	kW (kcal/h)	21,7 (18.662)	27,2 (23.392)
Minimum nominal heat input*	kW (kcal/h)	9,8 (8.428)	10,8 (9.288)
Maximum nominal heat output	kW (kcal/h)	19,3 (16.591)	24,3 (20.936)
Minimum nominal heat output*	kW (kcal/h)	8,7 (7.467)	9,7 (8.331)
D.H.W. flow rate range	l/min	selection switch min. from 2,5 to 5 ($\Delta t \sim 50^\circ\text{C}$) selection switch max. from 5 to 10,8 ($\Delta t \sim 25^\circ\text{C}$)	selection switch min. from 2,5 to 6,7 ($\Delta t \sim 50^\circ\text{C}$) selection switch max. from 6,7 to 13,6 ($\Delta t \sim 25^\circ\text{C}$)
Minimum pressure	bar	0,2	0,2
Maximum pressure	bar	10	10
Electric power supply	Battery	1 Battery x LR20 1.5 V Alkaline	1 Battery x LR20 1.5 V Alkaline
Weight	kg	11,8	13,6

* data referred to methane.

JULIUS ECO 11

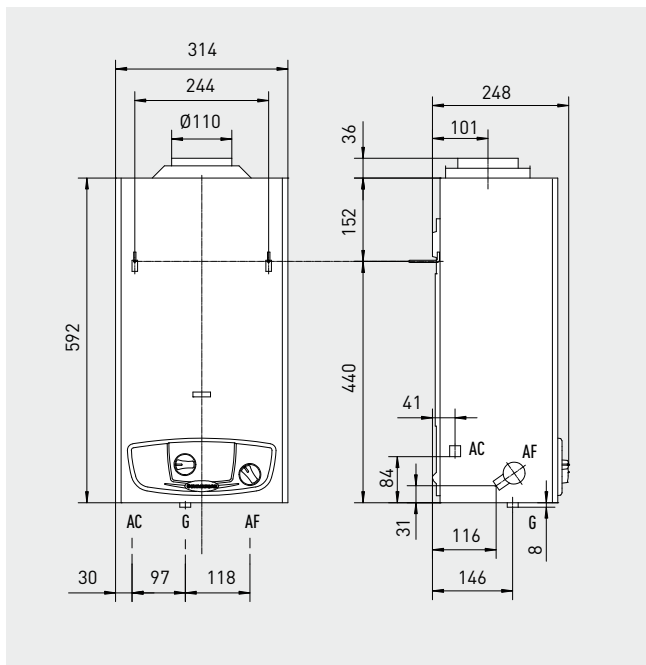


JULIUS ECO 14

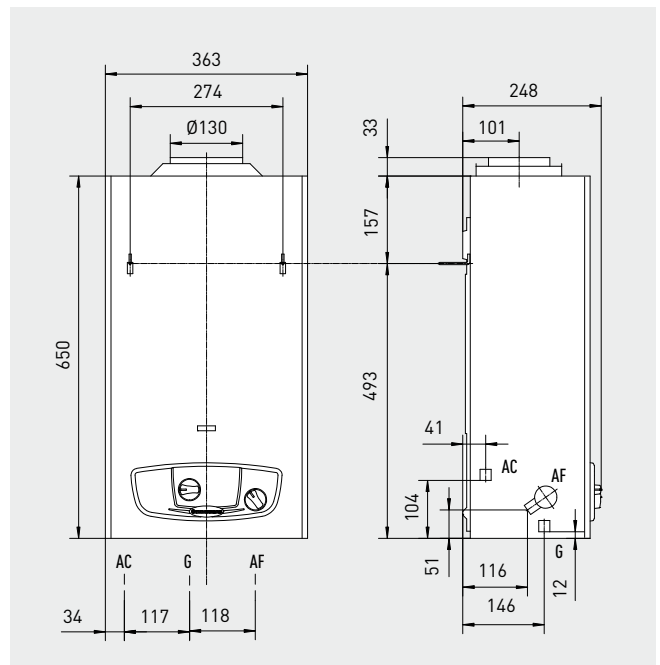


DIMENSIONS AND CONNECTIONS

JULIUS ECO 11



JULIUS ECO 14



Key

- AC Domestic hot water outlet
- G Gas supply
- AF Domestic cold water inlet

Hydraulic connections


Gas*	D.H.W.	
G	AC	AF
1/2"	1/2"	1/2"

* connection kit with 3/4" gas shut off knob, as option



Among the wide range of options it is possible to find out any specific accessory to complete the installation of gas water heaters. The use of original kits enhances quality and reliability of the products.

Anti-scale kit

Type		Code
Only for indoor installation		3.014114

All-purpose connection kit

Suitable to replace obsolete appliances		3.015027
---	--	----------

Shut off knobs

Gas and water inlet knobs kit		3.027712
-------------------------------	--	----------

Cover kit

For CAESAR EXTRA* NEW		3.029443
------------------------------	--	----------

* CAESAR EXTRA has been designed only for outdoor installation in partially protected area. This kit option provides just an additional weather protection.





App Immergas TOOLBOX



immergas.com

Immergas S.p.A.
42041 Brescello (RE) - Italy
T. 0522.689011
F. 0522.689178



IMMERGAS
IMMERGAS SPA - ITALY
CERTIFIED COMPANY
UNI EN ISO 9001:2015

Design, manufacture and post-sale assistance of gas boilers, gas water heaters and related accessories