

SMART KIT
WIRELESS
UI THOR
UI GOTHRA
UI CONS
UI CAS

IE

Instructions and recommendations

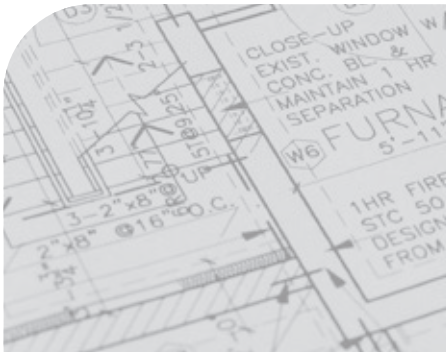
Installer

User

Maintenance technician

Technical Data

1.049221ENG



DEAR COSTUMER

Thank you for purchasing this product.

Before using the unit, carefully read this manual and keep it for future reference.

- This manual provides a detailed description of the precautions that you must pay attention to during use.
 - Read this manual carefully before using the Smart kit to guarantee its proper operation
-



INDEX

Dear Costumer	2
Safety symbols used	4
Personal protective equipment	4
1 Installation accessories.	5
2 Installation of Wireless module.	5
2.1 Installation for THOR - GOTH A indoor unit.	6
2.2 Installation for CONS indoor unit.	6
2.3 Installation for CAS indoor unit.....	8
3 Safety precautions.	10
4 Download and installation of the App.....	12
5 User registration.....	13
6 Preparation for network configuration.....	14
7 Network configuration (automatic method).....	16
8 Network configuration (manual method).	18
9 How to use the app.	20
9.1 Operating mode.	21
10 Special functions	22
11 Technical specifications.	26



SAFETY SYMBOLS USED



GENERIC HAZARD

Strictly follow all of the indications next to the pictogram. Failure to follow the indications can generate hazard situations resulting in possible serious harm to the health of the operator and user in general, and/or serious material damage.



WARNINGS

Strictly follow all of the indications next to the pictogram. Failure to follow the indications can generate hazard situations resulting in possible minor injuries to the health of the operator and user in general, and/or minor material damage.



ATTENTION

Read and understand the appliance's instructions before performing any operation, carefully following the indications provided. Failure to follow the indications can generate appliance malfunctions.



INFORMATION

Indicates useful tips or additional information.

PERSONAL PROTECTIVE EQUIPMENT



This marking on the product means that waste electrical and electronic equipment must not be mixed with generic household waste.

Do not dispose of this product as unsorted city waste. Incorrect management of waste has potential negative effects on the environment and on human health.

To dispose of the device, refer to waste electrical and electronic equipment collection centres or contact the dealer that you purchased it from.

Discharged batteries must be taken out of the remote controls and disposed of separately in compliance with local regulations.



1 INSTALLATION ACCESSORIES.

1.1 Operations prior to installation.

Check that the following components are included in the package.

No.	Description	Q.ty	Notes
1	USB Wireless Stick	1	
2	Use and installation manual	1	
3	Connection cable	1	Only for CAS kit

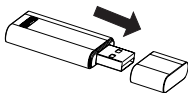
2 INSTALLATION OF WIRELESS MODULE.



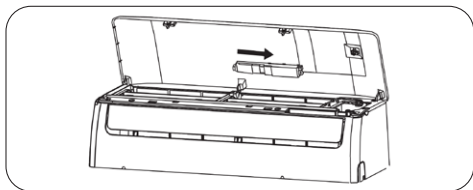
WARNING:

This interface is ONLY compatible with the Smart kit supplied by the manufacturer.

- 1) Remove the protective cap on the smart kit



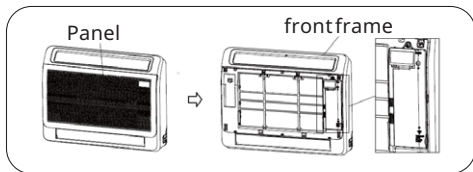
2.1 INSTALLATION FOR THOR - GOTHA INDOOR UNIT.



2) Open the front panel of the air conditioner, remove the screw from the cover of the display and insert the Smart kit in the specific slot. Close the panel.

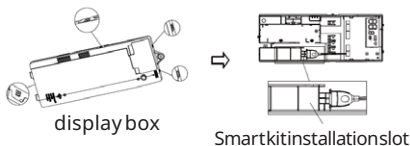
2.2 INSTALLATION FOR CONS INDOOR UNIT.

1) Open the panel: the display box is located on the front frame.

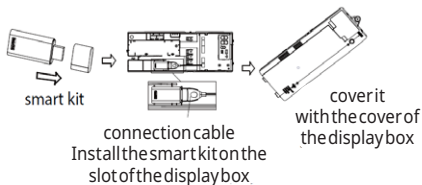


2) Remove the 4 clips from the display box and open the cover. The installation slot of the Smart kit is in the display box.





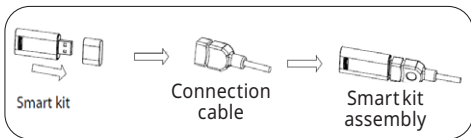
3) Remove the protective cap on the Smart kit, install it in the slot of the display box and connect to the connection cable. Lastly close the cover of the display box.



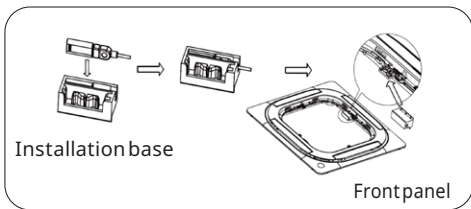
4) Install the display box on the front frame and then close the panel.

2.3 INSTALLATION FOR CAS INDOOR UNIT.

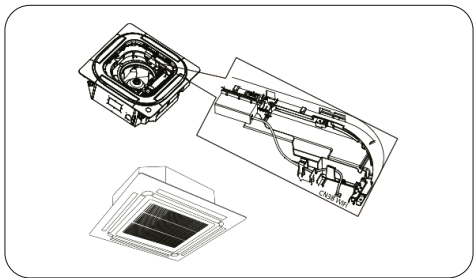
- 1) Remove the protective cap on the Smart kit and connect it with the connection cable.



- 2) After having fitted the Smart kit as indicated in point 1, attach the smart kit assembly to the installation base, then install it on the front panel.



- 3) Connect the wire of the smart kit assembly to CN 38 port of the main board.



4) After having connected the connection cable, apply the cover of the electrical connection box and then the grid.

3 SAFETY PRECAUTIONS.



WARNING:

- Read the safety precautions carefully before installing the unit.
 - Below are important safety guidelines to be complied with:
 - Applicable operating system: IOS, Android (IOS 12, Android 11.0 or higher)
-

NOTE:

- Due to the variety of operating systems and their versions and the possibility of particular and unpredictable circumstances occurring, compatibility with all devices cannot be guaranteed.
-

WIRELESS SECURITY:

- The Wireless Kit supports WPA-PSK/WPA2-PSK cryptography, but it works even without any cryptography. It is recommended to use WPA-PSK/WPA2-PSK cryptography.
-

**WARNING:**

- To properly scan the QR code, the smartphone camera must have a resolution of at least 5 million pixels.
- Different network configurations can occasionally cause a timeout of the request. In that case, the network must be reconfigured.
- Due to different network situations, at times the control process can lead to a timeout; if this occurs, the display between booklet and App screen might not be the same: be careful therefore not to get confused.

NOTE:

- Immergas will not be responsible for any problems and/or criticality caused by the Internet or Wireless router.
-



4 DOWNLOAD AND INSTALLATION OF THE APP.



WARNING:

The following QR codes have been provided to be able to download our APP called “CLIMAsmart”.

Android users.

Scan the dedicated QR code or go to Google Play, search for the “CLIMAsmart” app and download it.



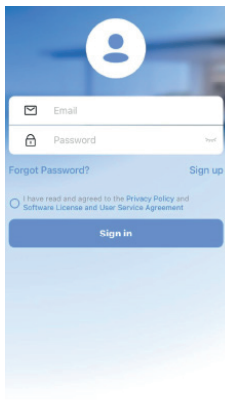
IOS users.

Scan the dedicated QR code or go to App Store, search for the “CLIMAsmart” app and download it.

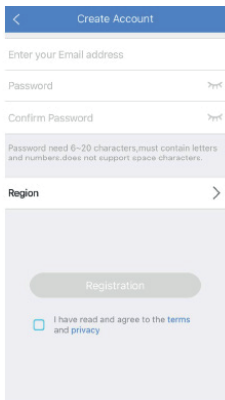


5 USER REGISTRATION.

- Make sure that the mobile device is connected to the wireless router and that the router is already connected to the Internet before performing user registration.
- If you've forgotten the password, press "Password forgotten?" and follow the procedure indicated on the App.



1. Click "**Sign up**"



2. Enter your email address and password, followed by the Region, then click "**Registration**"



6 PREPARATION FOR NETWORK CONFIGURATION.

- You must disconnect from any other network in the vicinity and make sure that the Android or IOS device connects to the Wireless network you want to configure.
- Make sure that the Wireless function of the Android or IOS device works properly and can automatically reconnect to the original Wireless network.

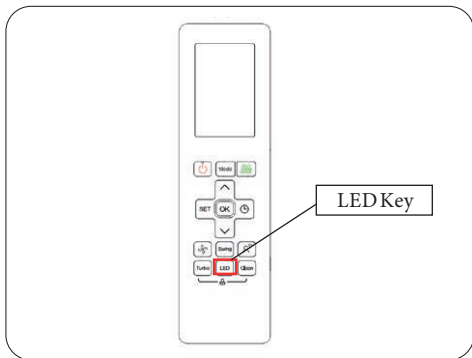
Use an Android or IOS device to configure the network.

1. Make sure that your mobile device is already connected to the Wireless network you want to use.
2. Make sure that the air conditioner is properly powered.



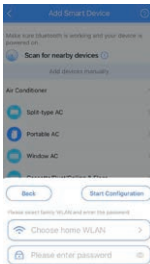
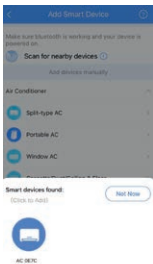
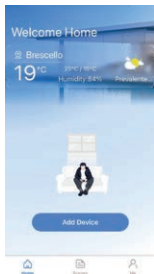
NOTE:

- When the air conditioner enters AP mode, its remote control cannot control it. In this circumstance, you must complete network configuration or switch power off and back on.
- Otherwise, wait 8 minutes to allow the air conditioner to automatically exit AP mode.



7 NETWORK CONFIGURATION (AUTOMATIC METHOD).

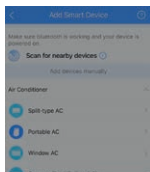
Make sure that the air conditioner is in AP mode, as shown on the previous page..



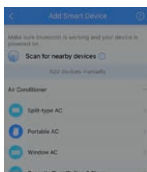
1. Press "Add device"

2. Wait for the device search, then click to add it

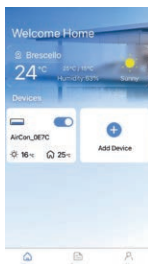
3. Select the name of the home network you want to connect the air conditioner to and enter the password



The device is connecting to the network...



Success



4. Wait for it to connect to the network

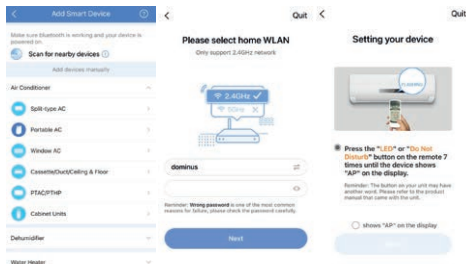
5. Configuration successful. You may now modify the default name of the air conditioner.

6. The device has been configured successfully. You can now see the device on the main screen.



8 NETWORK CONFIGURATION (MANUAL METHOD).

If automatic configuration, shown on the previous page, fails, perform manual configuration.



1. Manually select the type of product

2. Select the name of the home network you want to connect the air conditioner to and enter the password

3. Press the 'LED' key on the remote control 7 straight times, within 10 seconds, until the text "AP" appears on the device





Quit

Choose the device network



- Go to "WLAN List" to choose the device network then go back to app

net_ac_XXXX

12345678

Reminder: If "net_ac_XXXX" network is not found on the list, please retry the previous step to put the device in AP mode.

Go to WLAN list

4. The air conditioner displays a temporary Wireless network, called 'net_ac_XXXX', which you may connect to with your mobile phone, by entering the password '12345678'.



Successed to connect

Recommended Device Name:

Living Room

Dining Room

Kitchen

Master Bedroom

Children Bedroom

Study

Guest Bedroom

Storage Room

Custom Device Name:

AirCon_0E7C

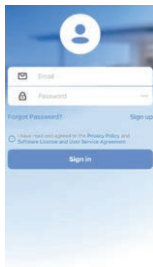
Save

5. The device has been configured successfully, you may now modify the name of the air conditioner.

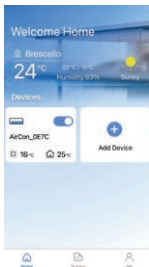


9 HOW TO USE THE APP.

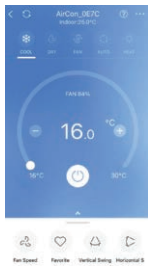
Make sure that the air conditioner is connected to the home Wireless network (see previous paragraph).



1. Login



2. Choose the air conditioner to be controlled



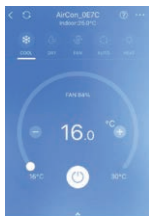
3. The available functions are displayed on the air conditioner screen



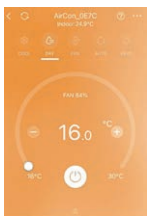
9.1 OPERATING MODE.

The available modes are:

Cooling



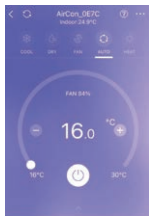
Dehumidification



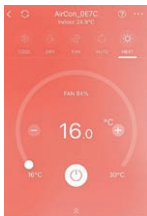
Ventilation



Automatic



Central heating



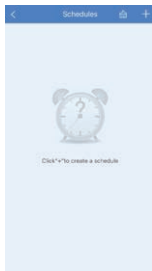
1. Cooling
2. Dehumidification
3. Ventilation
4. Automatic
5. Central heating



10 SPECIAL FUNCTIONS

Weekly schedule.

You may set the weekly schedule of the air conditioner so that it switches on and off automatically..



1. Press 'Schedules' to modify them

2. List of schedules

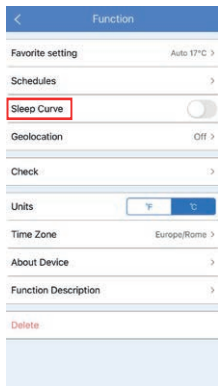
3. Setting a single schedule



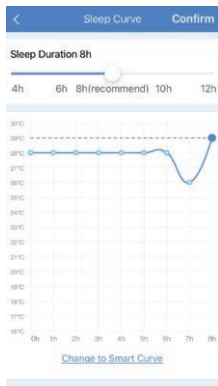
Sleep curve.

It is possible to set a sleep curve that takes into account the temperature and speed of the fan during the night, limiting noise and increasing air-conditioning comfort.

The sleep curve can only be activated in central heating and cooling mode.



1. Press 'sleep curve' to modify it



2. Set the sleep curve by adjusting the chart as you wish





ATTENTION:

If the air conditioner is used/controlled via App, this overrides the remote control.

If a command/modification is entered by remote control, it will be received by the air conditioner and then by the App; on the contrary, if the command/modification is sent by the App, the remote control will remain in the previous situation.



WARNINGS:

Model of wireless modules: EU-OSK105

IC: 24951-MZNA21

The manufacturer Immergas declares that the device complies with Directive 2014/53/EU.

Only use the device according to the instructions provided.

The manufacturer shall not be held liable in case of modifications or interventions not authorised by the manufacturer himself.

During normal operation, people must not be closer than 20 cm from the antenna.

NOTE:

This appliance generates, uses and can irradiate radiofrequency energy and, if it not installed and used according to the instructions, can cause harmful interference with radio communications. Nonetheless, there is no guarantee that interference does not occur in a particular installation. If this appliance causes harmful interference to radio or television reception, which can be determined by switching the appliance off and back on, the user is encouraged to try to correct the interference by taking one or more of the following measures:

- **Redirect or move the receiving antenna.**
- **Move the appliance and receiver further apart.**
- **Connect the appliance to a socket on a different circuit than that which the receiver is connected to.**
- **Consult the radio/TV dealer or a skilled technician for assistance.**



11 TECHNICAL SPECIFICATIONS.

Model	THOR - GOTHA CONSOLE - CASSETTE Wireless Kit (EU-OSK105).
Standard	Wireless IEEE 802.11 b/g/n
Software Version	V 11.34.7
Type of antenna	External omni-directional antenna
Wireless frequency	2.4G
Maximum power transmitted	<20 dBm
Operating temperature	0°C ~ 45°C
Operating humidity	10% ~ 85%
Power line inlet	DC 5V/500ma

RED Declaration of Conformity (DoC)

Unique identification of this DoC: No20250410001

We,

Immergas S.p.A.

Via Cisa Ligure, 95 | 42041 Brescello (RE)-ITALY

declare under our sole responsibility that the product:

product name: Smart Kit

trade name: IMMERGAS

type or model: EU-SK105, EU-OSK105

relevant supplementary information:

(e.g. lot, batch or serial number, sources and numbers of items)

to which this declaration relates is in conformity with the essential requirements and other relevant requirements of the RE Directive (2014/53/EU).

The product is in conformity with the following standards and/or other normative documents:

HEALTH & SAFETY (Art. 3(1)(a)): EN IEC 62311:2020, EN 62311:2008, EN 62368-1:2014/A11:2017

EMC (Art. 3(1)(b)): EN 301 489-1 V2.2.3: 2019, EN 301 489-17 V3.2.4 :2020
EN 55032:2015/A1:2020, EN 55035:2017/A11:2020, EN 50665:2017

SPECTRUM (Art. 3(2)): EN 300 328 V2.2.2 :2019

OTHER (incl. Art. 3(3)d): EN 18031-1:2024

Limitation of validity (if any):

Supplementary information:

Notified body involved: N/A

Technical file held by: GD Midea Air-Conditioning Equipment Co., Ltd

Place and date of issue (of this DoC): Brescello (IT) / April 2025

Signed by or for the manufacturer:

(Signature of author and person)

Name (in print): Guareschi Mauro

Title: R&D Manager



Immergas S.p.A.

42041 Brescello (RE) - Italy

Tel. 0522.689011

immergas.com



This instruction booklet is
made of ecological paper

